



TARWYN PARK FARM COMPLEX

KEPCO Bylong Australia (KEPCO) recognises the significance of historic heritage in the Bylong Valley, and is committed to minimising potential impacts of the Bylong Coal Project (the Project) to the cultural and historical values of the locality and the region. KEPCO has designed the Project to avoid and minimise direct impacts to heritage value wherever possible and will avoid open cut mining on the Tarwyn Park property.

TARWYN PARK

The Tarwyn Park property is located on Upper Bylong Road, and consists of a homestead constructed in 1926, stables and various farm buildings, and an adjoining property called 'Iron Tank'. There are also locations within the property where the previous owners practiced soil hydrology techniques called natural sequence farming.

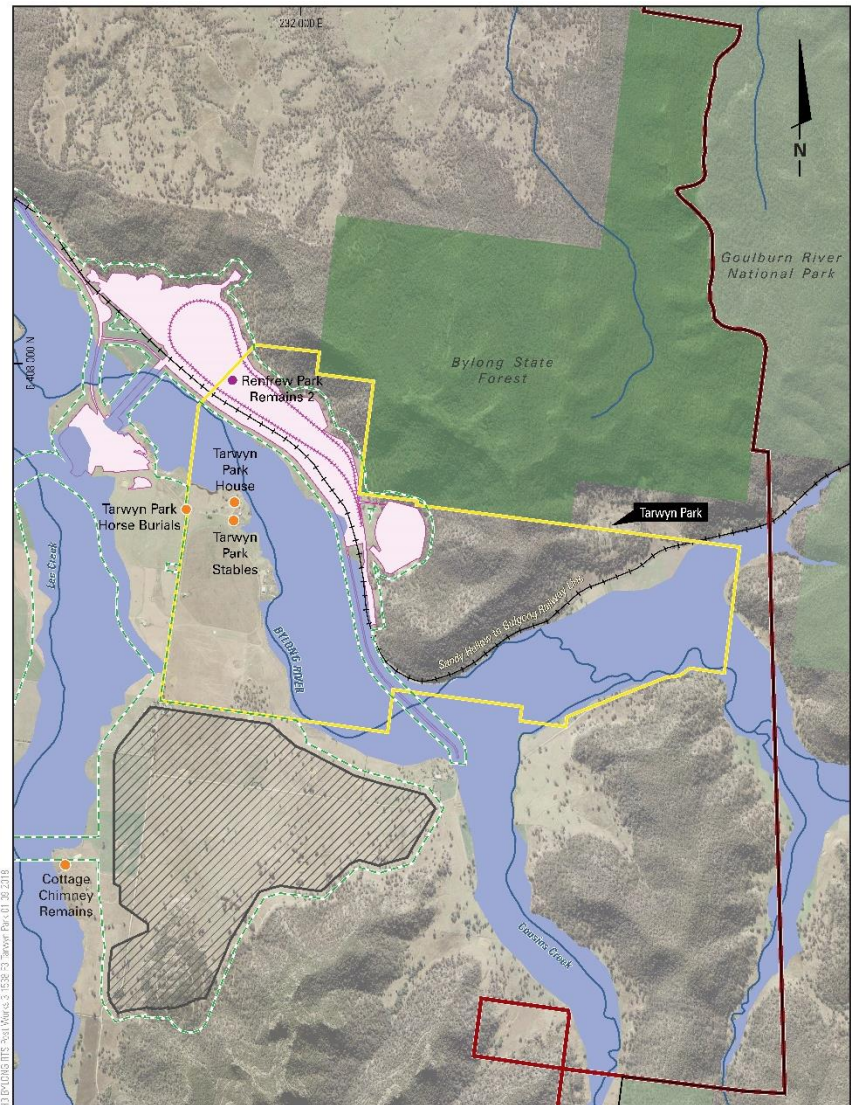
The natural sequence farming areas are generally located within the flood plain of the Bylong River and will not be subject to mining. A number of horses are known to be buried at the Tarwyn Park Farm Complex including two successful racehorses namely Rain Lover (Melbourne Cup winner in 1968 and 1969) and Eleazar.

The Tarwyn Park property is located within the Project Boundary but is not within the direct mining footprint.

CONSERVATION OF TARWYN PARK

A Historic Heritage Impact Assessment (HHIA) was completed for the Project as part of the Environmental Impact Statement (EIS) to assess the conservation values of Tarwyn Park and other sites potentially impacted by the Project. The HHIA was updated in July 2018.

A **Draft Historic Heritage Management Plan** (Draft HHMP) has been prepared in accordance with the 'Principles of the Burra Charter' (the Australia ICOMOS Charter for Places of Cultural Significance, 2013) which will be reviewed and updated following the grant of Development Consent to guide the management of all heritage sites or items within the Project Boundary and in proximity to it.



BYLONG COAL PROJECT



As a component of the Draft HHMP, a **Draft Conservation Management Plan** has been prepared for the Tarwyn Park Farm Complex and Iron Tank to provide a management framework that details the ongoing conservation measures to be implemented so as to conserve the heritage values of Tarwyn Park and Iron Tank. The proposed conservation management regime outlined within this document is based upon the 'Principles of the Burra Charter' and 'Kerr's Conservation Plan' (Kerr, 2013).

A site specific **Blast Management Plan** will be developed to manage and mitigate indirect impacts on heritage items in Tarwyn Park. A baseline condition report (or Dilapidation Report) has been completed for the Tarwyn Park structures to confirm their current condition. Ongoing condition surveys during mining operations will provide information as to the in-situ condition of the features identified.

KEPCO is committed to implementing an industry-leading rehabilitation program. Accordingly, a **Draft Rehabilitation Management Plan** (Draft RMP) has been prepared for the Project. The rehabilitation strategy takes into consideration the cultural values of the identified sites or items and their landscapes, including views and vistas, with the aim of restoring the landscape to its current condition and land use capabilities once mining is complete.

Commencing in the third year of the Project, rehabilitation will see the development of a stable final landform which is compatible with the surrounding environment. Further, KEPCO aims to return the land directly disturbed by the Project to its pre-mining land capability and land use.

Available portions of Tarwyn Park will continue to be utilised for agricultural purposes. To this end, KEPCO has appointed an experienced and qualified Farm Manager to ensure sustainable agricultural practices are being developed and implemented in consultation with a regional agronomist and the relevant regulatory authorities.

Tarwyn Park will be included in an aggregation of KEPCO-owned properties that will provide opportunity for extension of the relevant principles of soil hydrology techniques to other properties within the aggregation, and an opportunity for a level of rotational grazing that could not be achieved on Tarwyn Park in isolation.

To assist in preserving the homestead, and maintain soil hydrology land uses on the property, KEPCO is also proposing to utilise parts of the Tarwyn Park as part of a **Collaborative Research and Education Centre** (or alternative beneficial use). This will also assist in enhancing the local and regional knowledge of the soil hydrology land uses undertaken on this property.

The remains of Rain Lover and other horses buried at Tarwyn Park will not be impacted by the Project and will remain in situ.

CONTACT US:

For more information, please contact the **Bylong Coal Project team**:

Email: bylong@worleyparsons.com

Phone: 1800 BYLONG (1800 295 664)



Pictured: Tarwyn Park Farm Complex Homestead